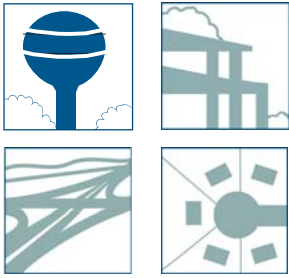


# WABASHA ALL HAZARD MITIGATION PLAN



**Hazard Mitigation Planning** is the process of determining how to reduce or eliminate the loss of life and property damage resulting from natural and human-caused hazards. Four basic phases are part of the hazard mitigation planning process.

- Organize resources
- Assess risks
- Develop a mitigation plan
- Implement the plan and monitor the process



**Client:**

County of Wabasha

**Location:**

Wabasha County, MN

**Services Provided:**

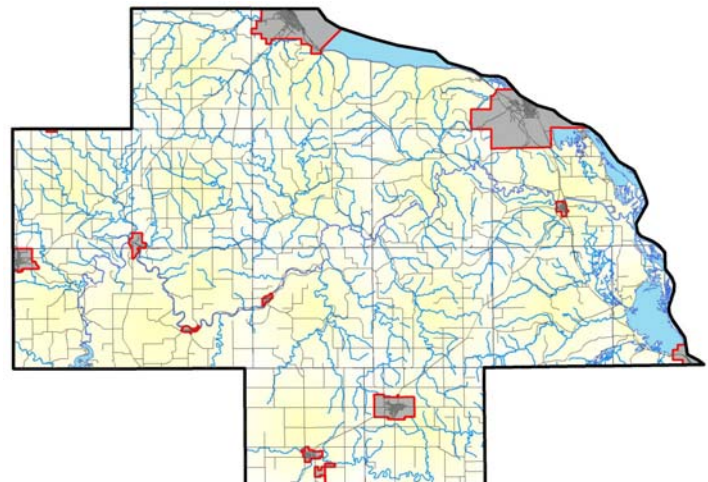
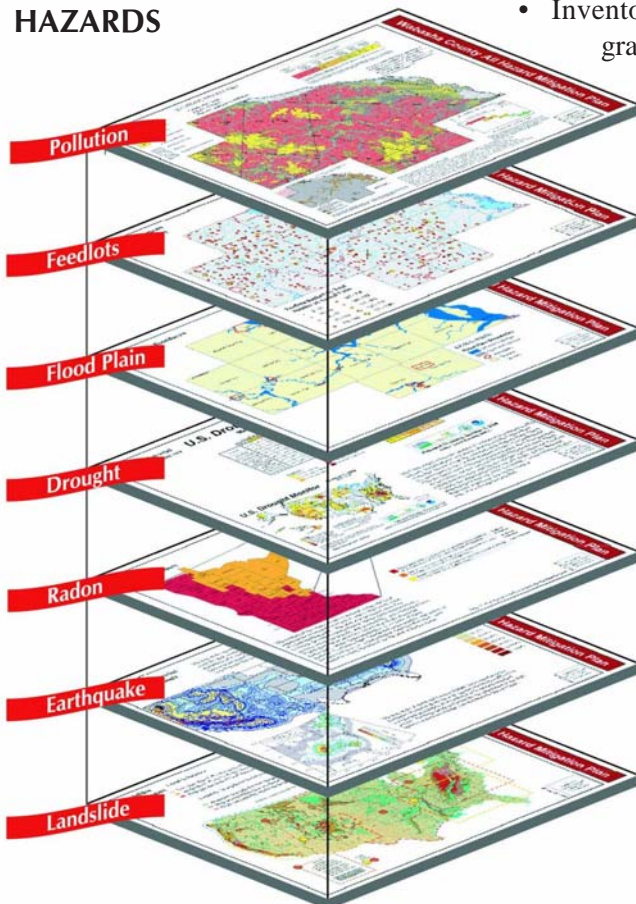
- Comprehensive Planning
- GIS Data Manipulation
- Document Preparation
- Public Involvement

Hazard Mitigation Planning reinforces the importance of mitigation planning, emphasizes planning for disasters before they occur and is intended to facilitate cooperation between federal, state and local authorities. It encourages and rewards local and state pre-disaster planning and promotes sustainability as a strategy for disaster resistance.

**Key Roles and Capabilities:**

- Coordinated available Geographic Information System (GIS) database information from multiple sources including, Federal, State and Local sources.
- Community investigation through document research, phone interviews, site visits, technical evaluation panel participation, and presentations to local community groups
- Profile and Identify Hazards in community
- Inventoried assets in the community and identify potential losses graphically and economically

**HAZARDS**



- Analyzed multiple data source information to develop mapping, graphics and tabular outputs
- Assisted Technical Evaluation Panel in developing draft and final documents.
- Coordinated document reviews with local, state and federal officials
- Solicited community comments through a series of public meetings in each community