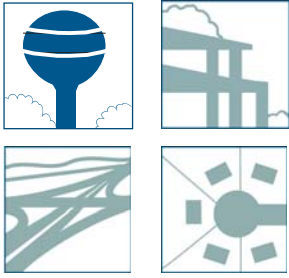
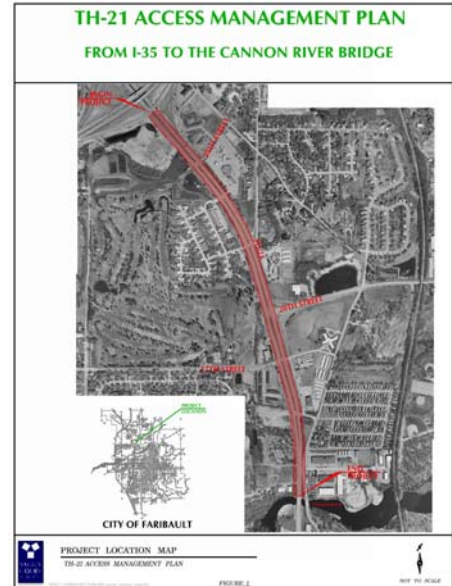


TH 21 ACCESS MANAGEMENT PLAN



As a result of growing traffic levels and new development along a 1.5 mile portion of Lyndale Avenue (Minnesota Highway 21) through the City of Faribault, Yaggy Colby Associates prepared a plan to identify and evaluate operations and recommend access management and safety improvements. Recommendations from the study were based on new Mn/DOT access spacing and design guidelines to enable the city to plan for and regulate land use, access, and local circulation in a consistent and coordinated manner. The plan also ensures continued mobility and safety along the corridor and that existing and planned development is served by reasonable and convenient access. As part of this plan for future access and intersection control, with the access management plan identified for the corridor, the next step was to begin the preliminary design for two intersections with safety and capacity issues. Layouts were completed to re-align safe roads and provide for the installation of signal systems. As part of the project, Yaggy Colby Associates also prepared a project memorandum, wetland delineation, hydraulic analysis, and other design needs, as well as evaluated the design feasibility of grade separated trail crossings.



Client:
City of Faribault

Contact:
Tim Murray
(507) 333-0360

Location:
Faribault, MN

Construction Cost:
To be determined

- Services Provided:**
- Project Management
 - Transportation Planning
 - Access Management
 - Traffic Forecasts
 - Geometric Concepts
 - Alternative Analysis
 - City and Mn/DOT Coordination
 - Preliminary and Final Design

